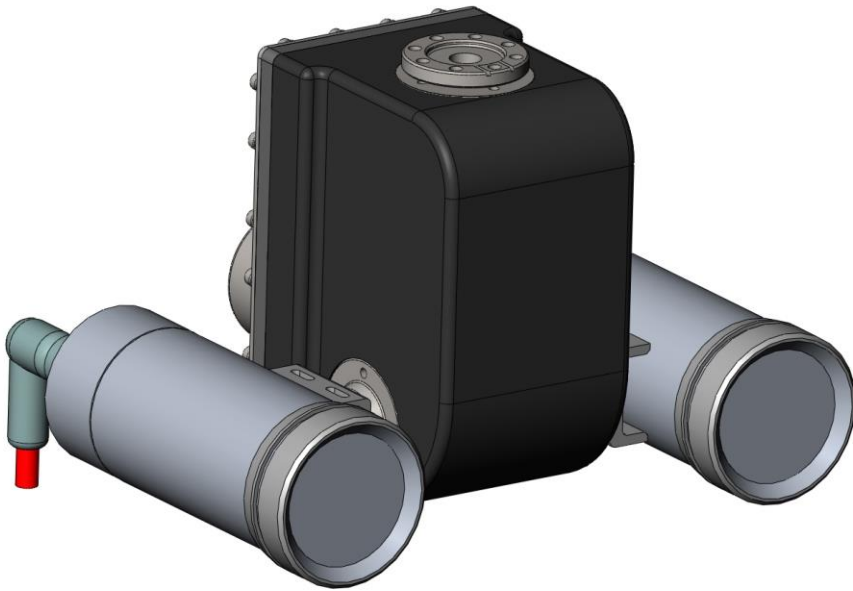


Macduff Robotics

Intelligent Subsea Equipment



*Cameras not included, shown here for illustrative purposes

Description:

A dual axis rotator unit powered by brushless DC motors for long-term reliable operation. Built using the highest quality gear assemblies and high reduction gearboxes and housed in a self-compensating oil filled Acetal body, this unit is corrosion resistant for long-term operation.

24Vdc Electric pan & tilt unit

Equipment supplied

Standard tool supply includes

- Pan & tilt unit assembly
- Operating manual

MAIN FEATURES

- Very low in water weight
- Reliable and low maintenance construction using brushless DC motors
- Simple controls (Serial control optional)
- Overload protection
- Variable position limit switches
- Position feedback
- Dual camera mount

Further Information

Spares kits also available



info@macduff-robotics.com

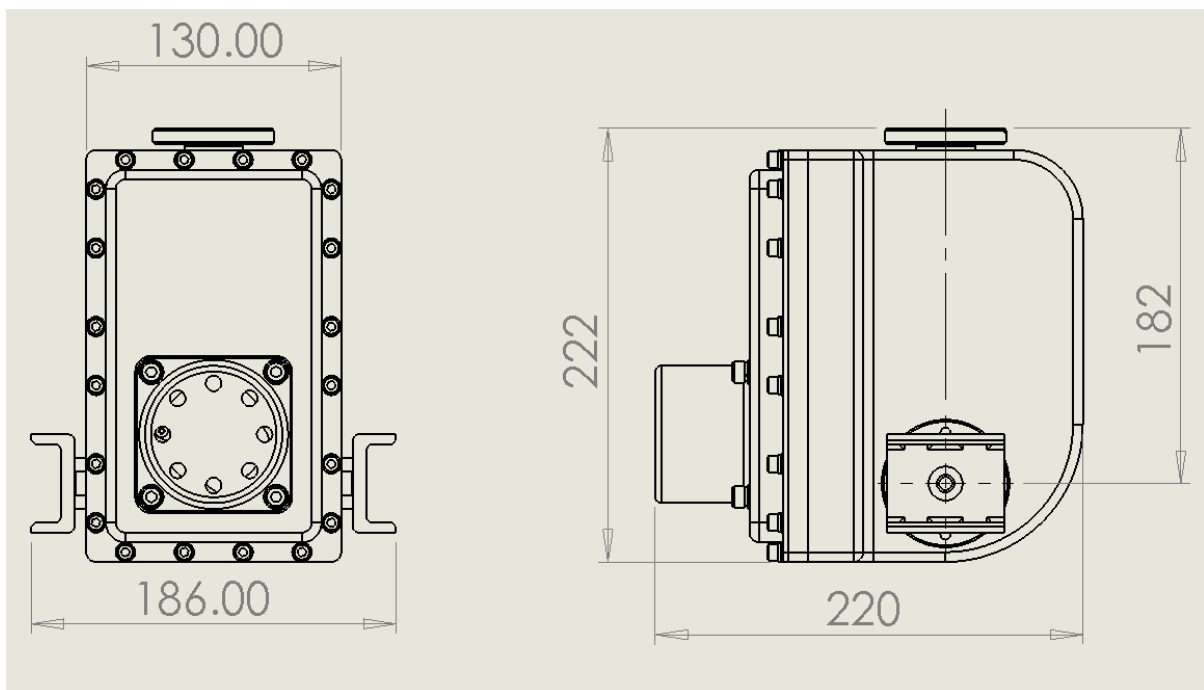
Specifications

Weight in Air	6.5Kg
Weight in Water	4.5Kg
Supply Voltage	24Vdc
Output Torque	12Nm (High torque options available)
Typical rotational speed	4 rpm

Optional additions

- Digital communication (RS232/485)
- Self-contained pressure compensation
- High torque (low speed) versions available

Typical dimensions – shown with optional self-compensation



Information contained in this data sheet is up-to-date and correct as at the date of issue. All product designs, specifications and data are subject to change without notice to improve reliability, function, design or otherwise. No express or implied warranties are given.